



SC Multimodal Transportation Plan Breakdown of Needs

2040 Baseline Revenue

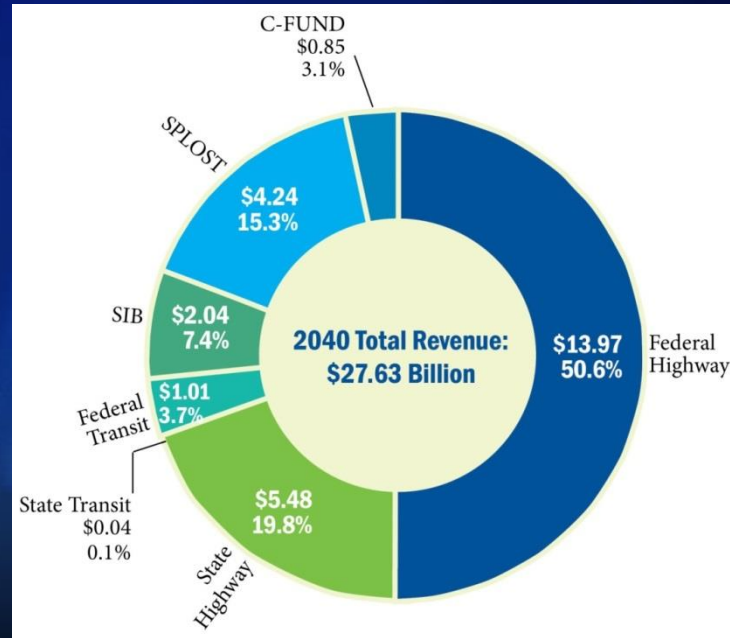
Federal, State, and Local

2040 Revenue

\$27.63 Billion

(in 2011 Dollars)

29 Years



SIB = State Infrastructure Bank

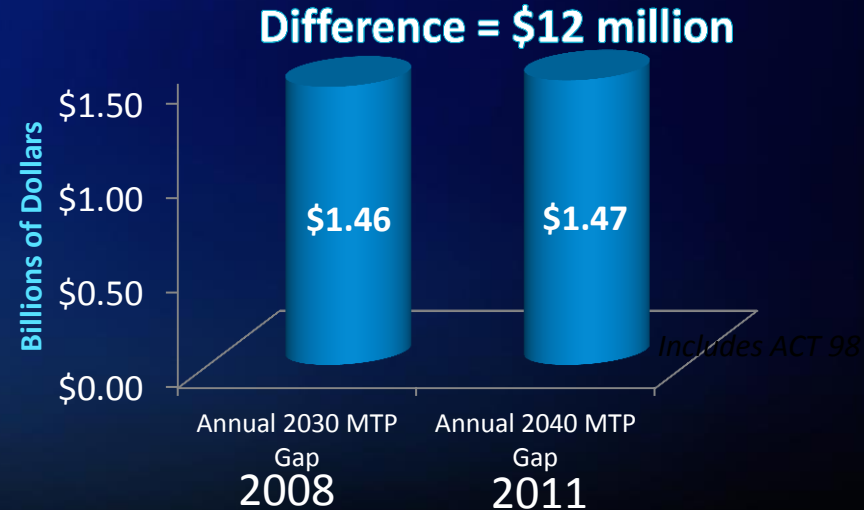
SPLOST = Special Purpose Local Option Sales Tax

MTP Reference: Executive Summary page 40



Funding Gap

2040 MTP - 29-Year Horizon



Includes highway, bridge, and transit.
20 Year Gap = \$29.54 Billion

MTP Reference: Executive Summary page 41

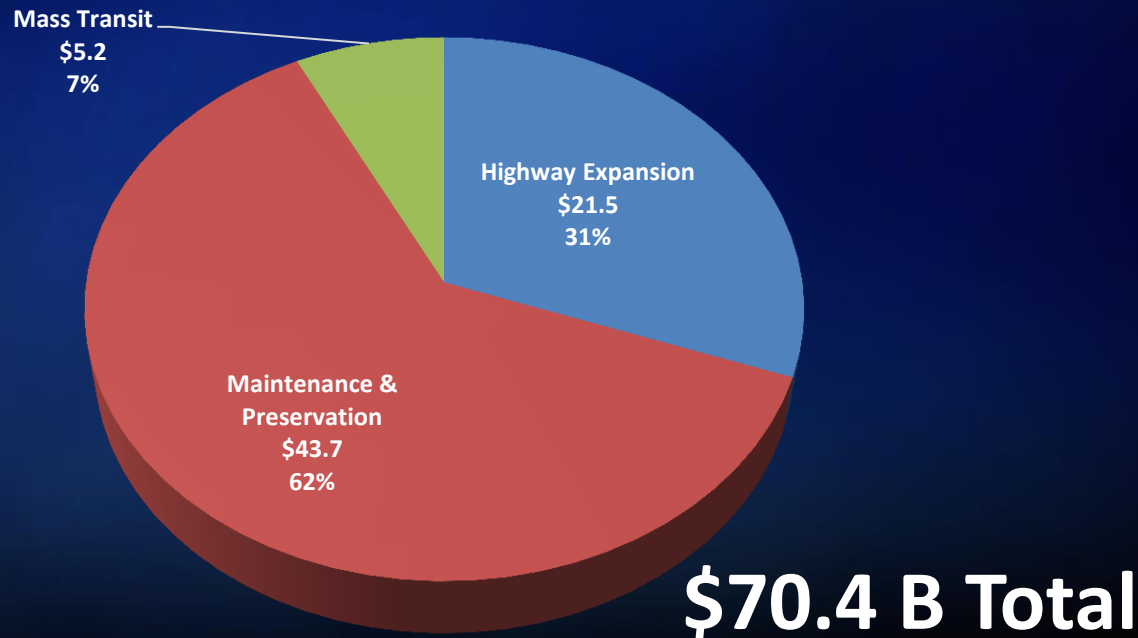


Funding Gap Categories

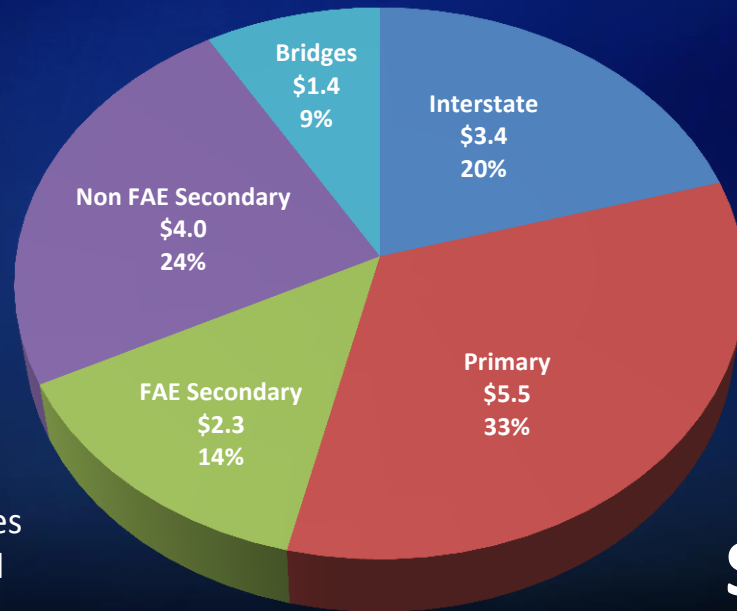
- Bridges- Bridge replacement and rehabilitation
- Modernization and Routine Maintenance- Shoulder widening, full depth patching, full depth roadway reconstruction, mowing, signage, ditching, vegetation control, pot hole repair, etc.
- Highway Expansion – Interstate, Primary and Secondary System, lane additions
- Preservation- Resurfacing and pavement preservation treatments



Total 2040 Need by Investment Strategy



2040 Modernization and Routine Maintenance Need by Network

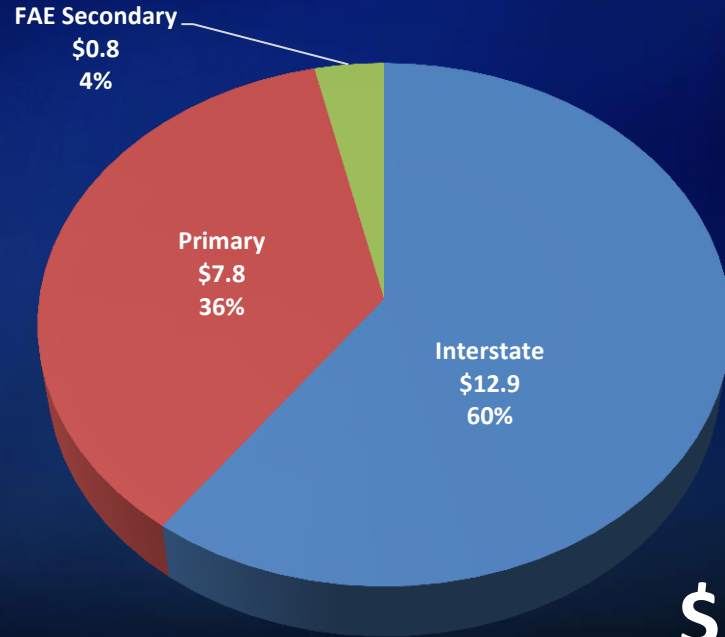


\$16.6 B Total

Note: Non FAE Secondary includes routes classified as local and rural minor collectors



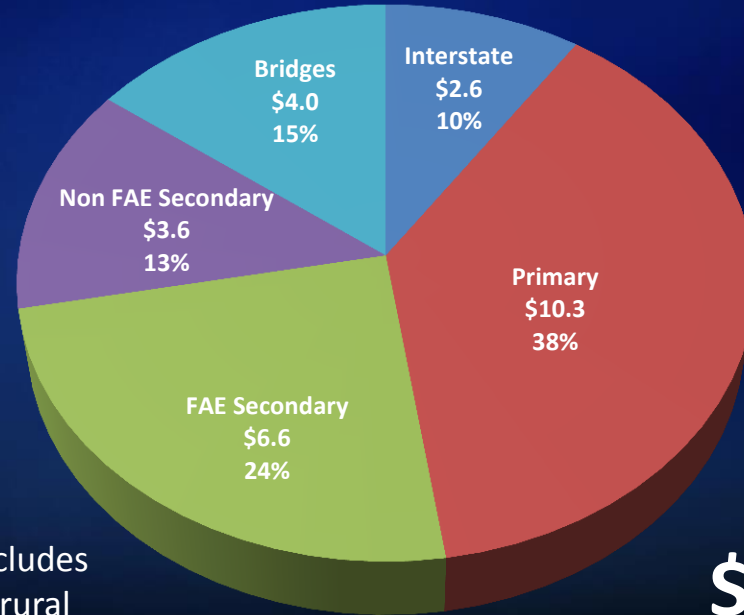
2040 Expansion Need by Network



\$21.5 B Total



2040 Preservation Need by Network

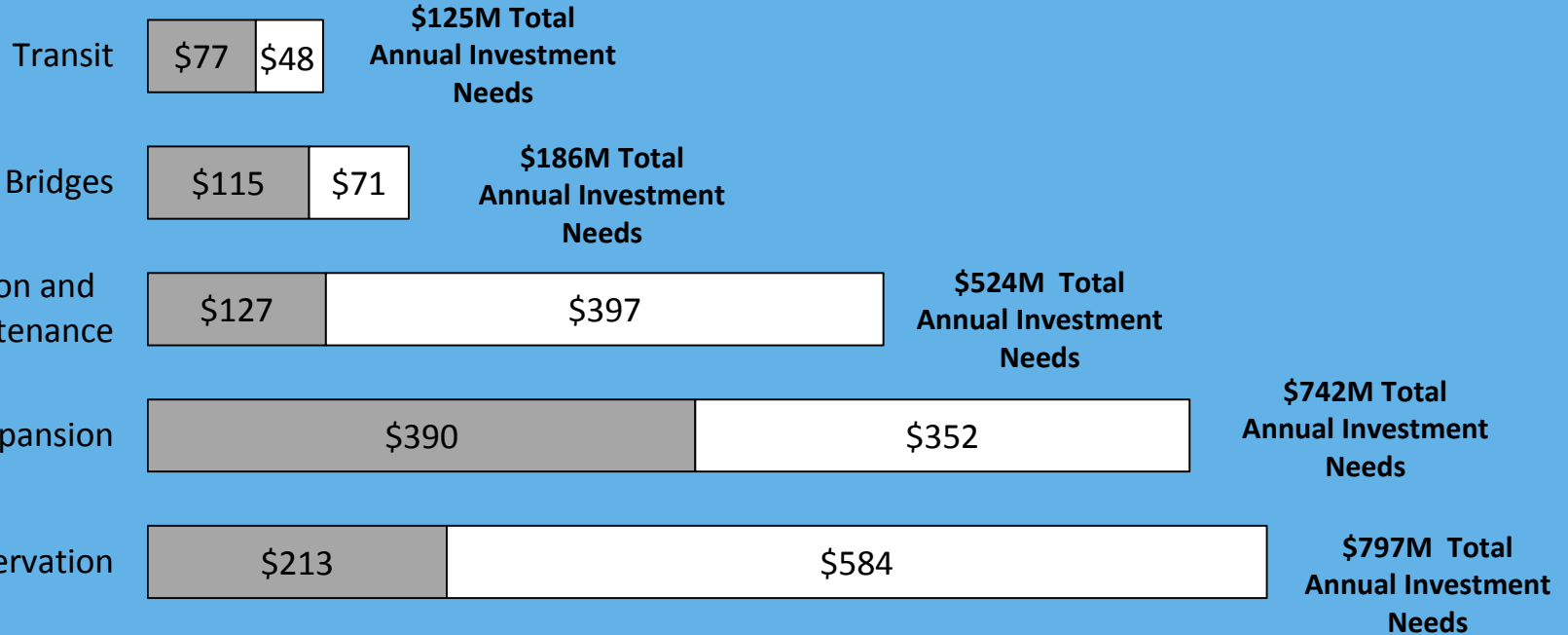


\$27.1 B Total

Note: Non FAE Secondary includes routes classified as local and rural minor collectors



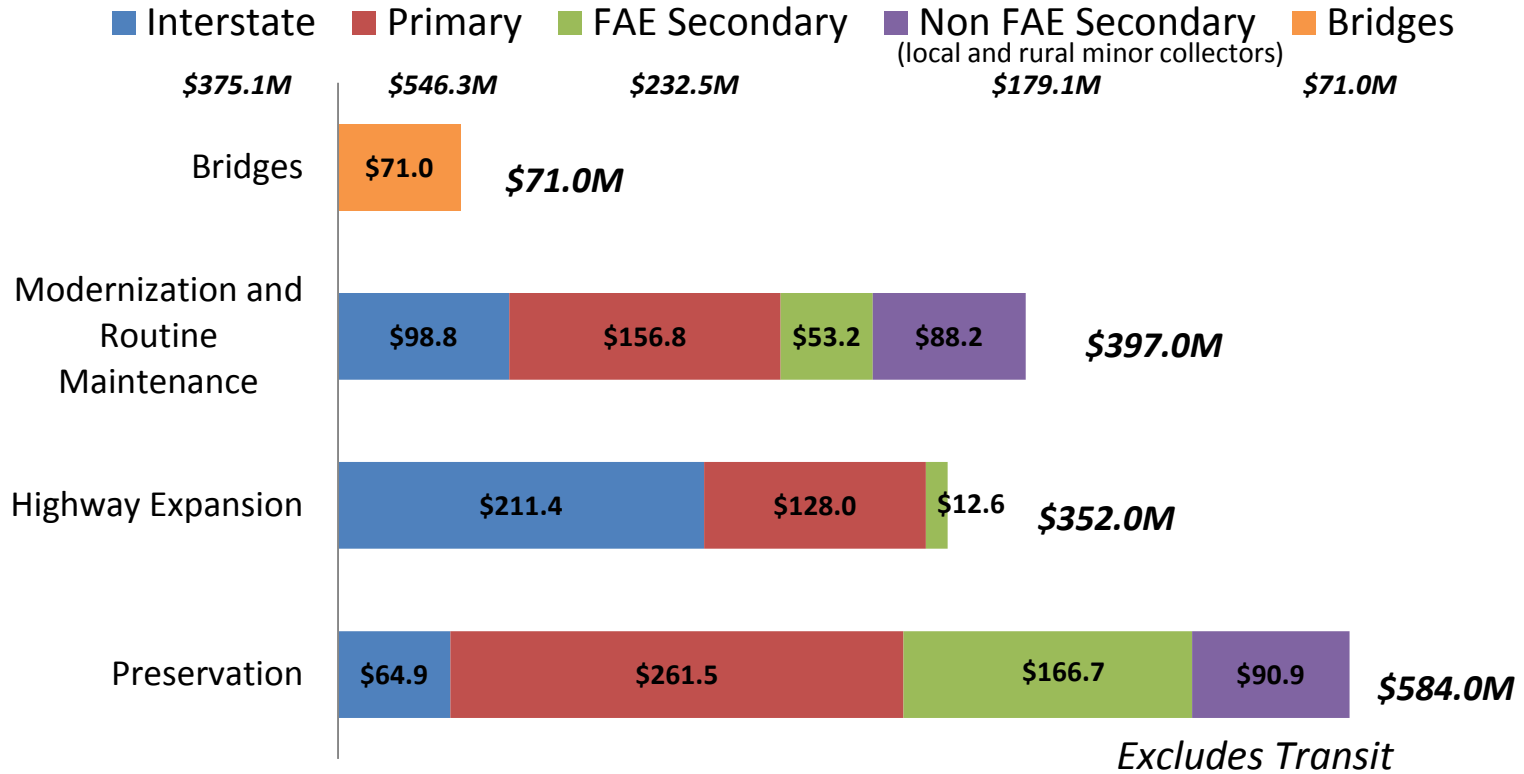
Annual Funding Gap by Category



■ Approximate Annual Funding Allocation

□ Remaining Annual Funding Need

Annual Funding Gap



Summary

- Breakdown of needs can serve as a starting point for investment of additional revenues
- Scale and duration of additional investment influences resource deployment
- Ramp up period required depending on complexity of activity/projects
Could initially focus more heavily on preservation as ramp up occurs



Questions?

